

### TRADE/APPLICATION

Professional Quality and Performance

We've got a glove that fits your job

#### Ansell's Construction Series gloves

- are the industry leader in cut resistance
- protect workers from cuts, bruises, chemicals, temperature extremes and other construction or industry hazards
- enable employers to provide Personal Protection Equipment for their employees and remain OSHA compliant



#### GENERAL CARPENTRY



##### High Risk

- Handling sharp and/or jagged material or metal
- Thin gauge sheet metal or metal studs
- Broken glass or sharp metal casings
- Demolition applications
- Applications where cuts/lacerations/wood splinters are highly probable

##### Moderate Risk

- Handling moderately sharp materials
- Engineered/pressure treated, asphalt shingles
- Thicker gauge steel studs
- Light gauge demolition

##### Minimum Risk

- General purpose carpentry & material handling (drywall, lumber, trim, etc.)
- Handling power tools such as corded/cordless drills/pneumatic nailers, etc.
- Picking up small parts (nails)



#### HVAC/SHEET METAL USERS/WINDOW GLAZER



##### High Risk

- Fabrication & demolition of thin gauge metal ductwork
- Cutting or mending ductwork and/or window frames
- Applications where cuts/lacerations are highly probable (stainless/galvanized steel, aluminum)

##### Moderate Risk

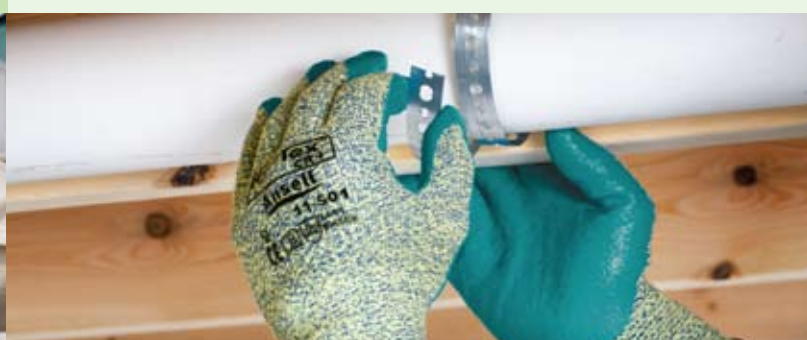
- HVAC & window frame installation
- Minimal mending/fabrication
- Applications where cut risk is moderate

##### Minimum Risk

- Using screwguns or other power tools to install HVAC or window frame units.
- Handling small fasteners
- Applications where cut risk is low but dexterity is important



#### PLUMBERS



##### High Risk

- Demolition of bathrooms, handling or cutting pipe (PVC, copper, steel)
- Installing steel pipe hangers/cutting pass-through holes for piping

##### Moderate Risk

- Handling wet materials/pipes where grip is important
- Exposure to chemicals/solvents/hazardous liquids/PVC cements or standing water
- Sweating pipes

##### Minimum Risk

- Assembling/tapping copper/PVC pipe sections
- Diagnostic testing
- Handling small fasteners, clamps, valves, or fixtures



#### MASONRY/TILE



##### High Risk (CHEMICAL OR DERMATITIS)

- Handling fillers/solvents, dye agents, cleaning solvents, cement/mortar mixing
- Concrete/grout or tile finishing/smoothing
- Cleaning tools

##### High Risk (CUT/LACERATION)

- Handling/installing/cutting/setting ceramic/marble tile
- Tying rebar

##### Moderate Risk

- Handling/moving concrete/brick/mortar
- Setting scaffolding & formwork
- Concrete demolition/roadwork



#### ELECTRICIANS



##### Moderate Risk

- Installing & wiring electrical boxes/conduit/junction boxes
- Working with small wires/cables where hand fatigue, puncture are important

	Cut Protection Glove 97-505	HyFlex® 11-501	PowerFlex® Plus™ 80-600	HyFlex® 11-500	HyFlex® 11-627	HyFlex® 11-900	HyFlex® 11-801	AlphaTEC™ 58-530/535	PowerFlex® T° Hi Viz Yellow™ 80-400
<b>HIGH</b>	Up to 8X's more cut protection than the most popular construction and leather gloves, plus increased durability & abrasion resistance for the most demanding applications. Ansell's new Cut Protection Construction Glove features exclusive Intercept Technology® with DuPont™ Kevlar® fiber for best-in-class cut protection, abrasion resistance and barehand comfort. ANSI Level: 4 Cut level: High Puncture level: Medium Abrasion level: High	Intercept Technology®—a yarn jointly developed by Ansell and DuPont™ incorporating Kevlar® Stretch Armor Technology—provides outstanding cut protection and dexterity. ANSI Level: 4 Cut level: High Puncture level: Medium Abrasion level: Medium	Seamless DuPont™ Kevlar® knit lining provides increased cut, abrasion and puncture resistance. ANSI Level: 2 Cut level: Medium Puncture level: High Abrasion level: Medium	Stretch DuPont™ Kevlar® liner provides increased dexterity, moderate to high cut resistance, in an extremely dexterous glove. ANSI Level: 2 Cut level: Medium Puncture level: Medium Abrasion level: Medium	Innovative Dyneema® and LYCRA® liner provide moderate cut resistance combined with dexterity and increased durability in applications where abrasion and puncture are an issue. ANSI Level: 1 Cut level: Medium Puncture level: High Abrasion level: High	A cool, comfortable glove that provides excellent dry grip and abrasion protection. ANSI Level: 1 Cut level: Low Puncture level: Medium Abrasion level: Medium	The glove forms to the hand like a second skin, helping to reduce hand fatigue and promoting maximum dexterity. ANSI Level: 1 Cut level: Low Puncture level: Medium Abrasion level: Medium	Featuring our revolutionary Ansell Grip Technology™, this glove is perfect for working with hazardous chemicals or dangerous liquids. Cut level: Low Puncture level: Medium Abrasion level: Low	Ideal for cold environments reaching as low as -13 degrees Fahrenheit or -25 Celsius. Cut level: Medium Puncture level: Medium Abrasion level: Medium
<b>MODERATE</b>	✓	✓		✓	✓				
<b>LOW</b>						✓	✓		✓
<b>CHEMICAL</b>								✓	✓
<b>COLD WEATHER</b>						✓			✓

**CUT PROTECTION PERFORMANCE LEVELS**  
The Cut Protection Performance Test (CPPT) is an ASTM F 1790 standard cut test. The cut performance rating measures the amount of force (in grams) applied for failure to occur at a 25 mm distance of travel for a standard cutting blade. The higher the value, the better the cut performance. The performance rating is classified by ANSI/ISEA 105-2005 from a 0-5 level based on the outcome of the CPPT test.

Products that provide "cut resistance" and "cut protection" do not completely prevent or eliminate the potential for cuts and punctures, and are not intended or tested to provide protection against powered blades or other sharp or rotating equipment. Users are encouraged to always use caution and care when handling sharp metals.

ANSI Performance Level	CPPT Range (grams)
0	< 200
1	> 200
2	> 500
3	> 1,000
4	> 1,500
5	> 3,500

**DESIGNED TO FIT YOU AND THE JOB YOU DO™**

Visit [AnsellConstruction.com](http://AnsellConstruction.com) for more information & purchase options.

Ansell, HyFlex, PowerFlex and Intercept Technology are registered trademarks and Designed to Fit You and the Job You Do™, Ansell Grip Technology™, Hi Viz Yellow™, Plus™ and AlphaTEC™ are trademarks owned by Ansell Limited or one of its affiliates. Dyneema® is a registered trademark owned by Royal DSM N.V. LYCRA® is a registered trademark owned by INVISTA. DuPont™ and Kevlar® are trademarks or registered trademarks of DuPont or its affiliates. Kevlar® Technology is protected by the following U.S. Patent: 6,962,064. © 2008 Ansell Limited. All Rights Reserved. Printed in the U.S.A. Cons Post 11/08